

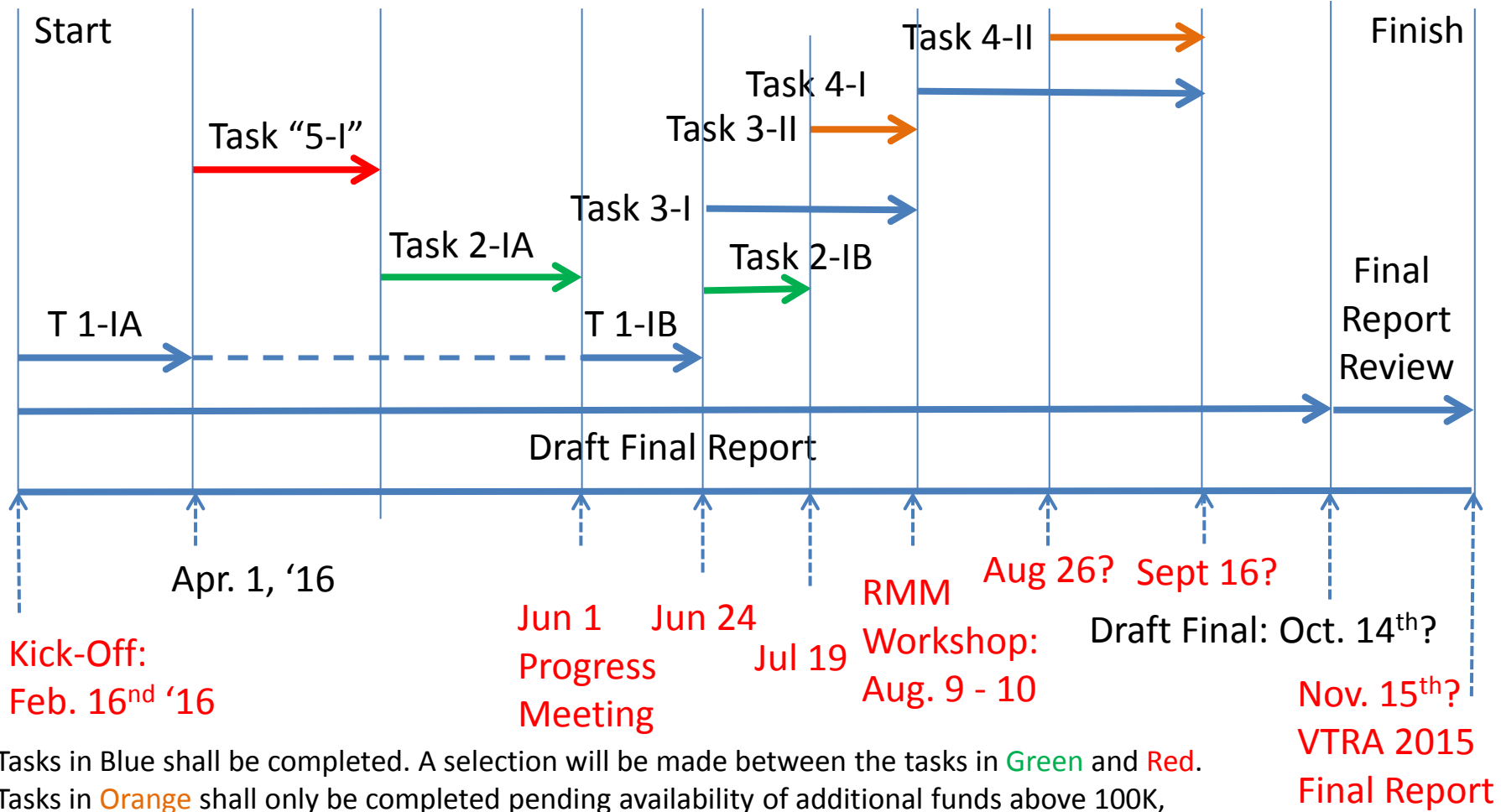
## WHERE ARE WE? AND ... WHERE DO WE GO FROM HERE?



**Jason R.W. Merrick (VCU) and J. Rene van Dorp (GW)**

August 9<sup>th</sup> - 10<sup>th</sup>, 2016

# Updated VTRA 2015 Project Schedule



- ✓ T 1-IA : AIS Count line Traffic Stream Analysis
- ✓ T "5 -1" : Recalibrate VTRA 2010 Model to 1990 – 2015 Accident Data resulting in VTRA '15 Cal. Case (Note: this replaces Task 5-1)
- ✓ T 2-IA : Compare Updated Case Q, R an S to VTRA '15 Cal. Case
- ✓ T 1-IB : Incorporate AIS Count line Traffic Stream Results in VTRA '15 Cal. Case to develop VTRA '15 Base Case
- ✓ T 2-IB : Compare VTRA '15 Base Case to VTRA '15 Cal. Case
- ✓ T 3-I : Analyze one "Combined What-If Case" consisting of a selection of additional "terminal projects" and compare to the VTRA '15 Base Case  
**CASE USKMCA - 1598**
- T 4-I : Analyze one "RMM Case What-If " consisting of a portfolio of RMM's applied to "Combined What-If Case "**CASE USKMCA - 1598 - RMM** and compare to this "Combined What-If Case" **CASE USKMCA - 1598**
- ✓ T 3-II : Evaluate at most three additional "terminal projects What-if Cases U" on Top of VTRA '15 Base Case and compare to the VTRA '15 Base Case.  
**CASES US230, KM348, USKMCALN2248**
- T 4-II : Separate **CASE USKMCA - 1598 - RMM** into at most three "sub – RMM Cases" applied to **CASE USKMCA - 1598 - RMM** or **KM - 348** or **US - 230**
- T - F : Draft / Final Report Task

Phase I Tasks in Blue shall be completed. A selection will be made between the Phase I Tasks in Green and Red. Phase II Tasks in Orange shall only be completed pending availability of additional funds above 100K.

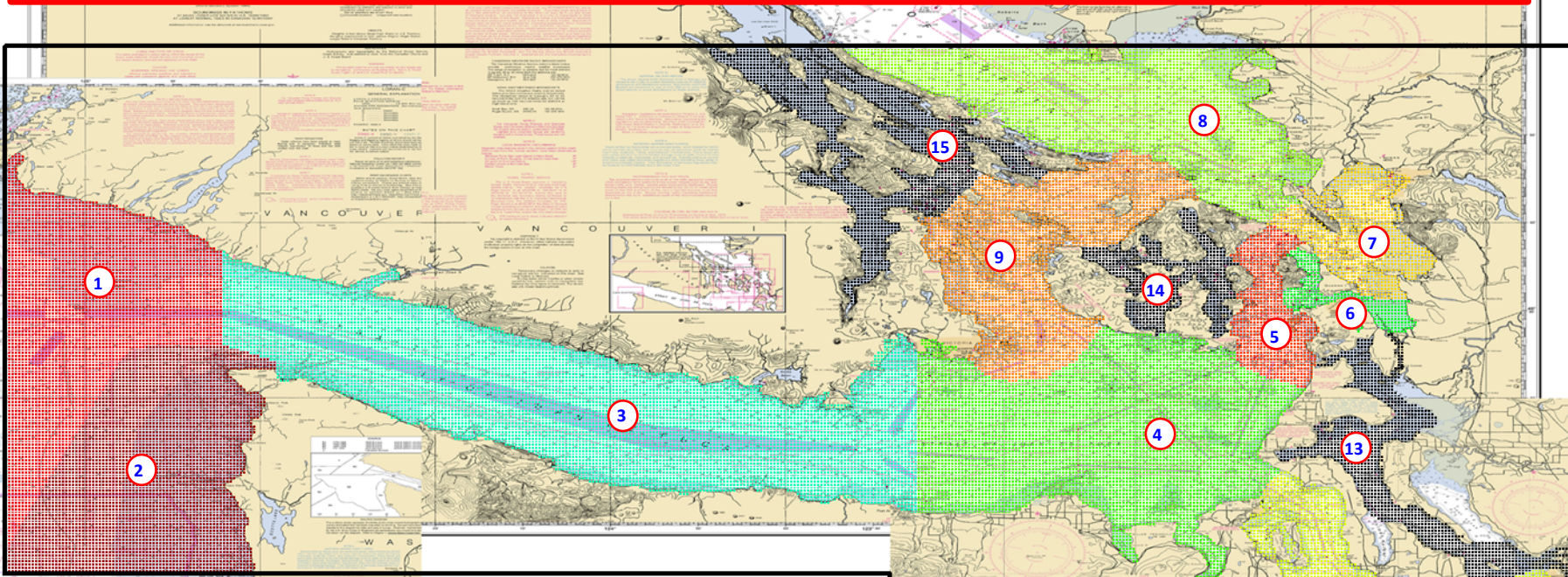
## Order of Presentations

1. Summary of What-If Descriptions
2. A Comparison of **Case US-KM-CA 1598** to the **VTRA 2015 Base Case**
3. Waterway Zone Summary of What-If Cases

## Supplementary Presentations

1. A Comparison of **VTRA 2015 Base Case** to the **VTRA 2015 Calibration Case**
2. A Comparison of **Case US-230** to the **VTRA 2015 Base Case**
3. A Comparison of **Case KM-348** to the **VTRA 2015 Base Case**
4. A Comparison of **Case CA-1020** to the **VTRA 2015 Base Case**
5. A Comparison of **Case US-KM-CA-LN 2248** to the **VTRA 2015 Base Case**

# DEFINITION OF 15 WATERWAY ZONES



## VTRA 2015 Waterway Zones

- |                 |                           |
|-----------------|---------------------------|
| 1. Buoy J       | 9. Haro/Boun.             |
| 2. ATBA         | 10. PS North              |
| 3. WSJF         | 11. PS South              |
| 4. ESJF         | 12. Tacoma                |
| 5. Rosario      | 13. Sar/Skagit            |
| 6. Guemes       | 14. SJ Islands            |
| 7. Saddlebag    | 15. Southern Gulf Islands |
| 8. Georgia Str. |                           |

