

VESSEL TRAFFIC RISK ASSESSMENT (VTRA) 2010

3D Relative Risk Profile Comparison
Potential Collision Oil Loss

CASE S – DP 415 + Bunkering

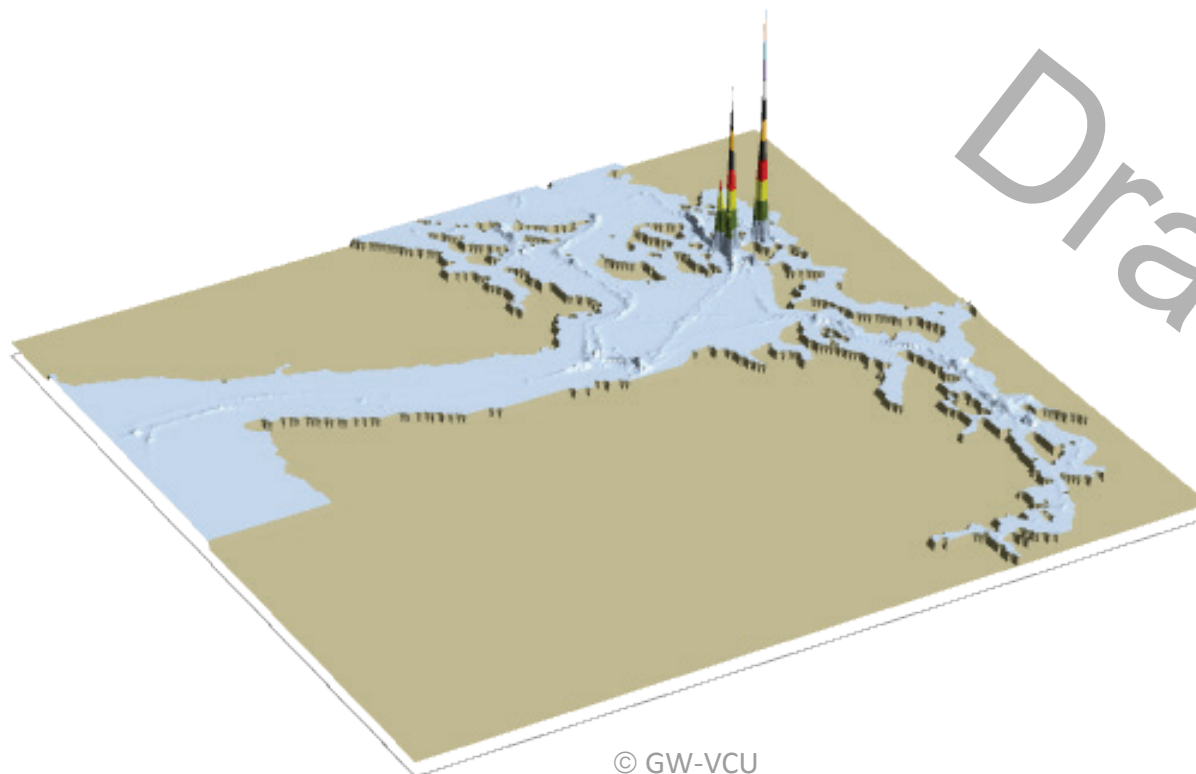
Dr. J. Rene van Dorp and Dr. Jason R.W Merrick

November 2013



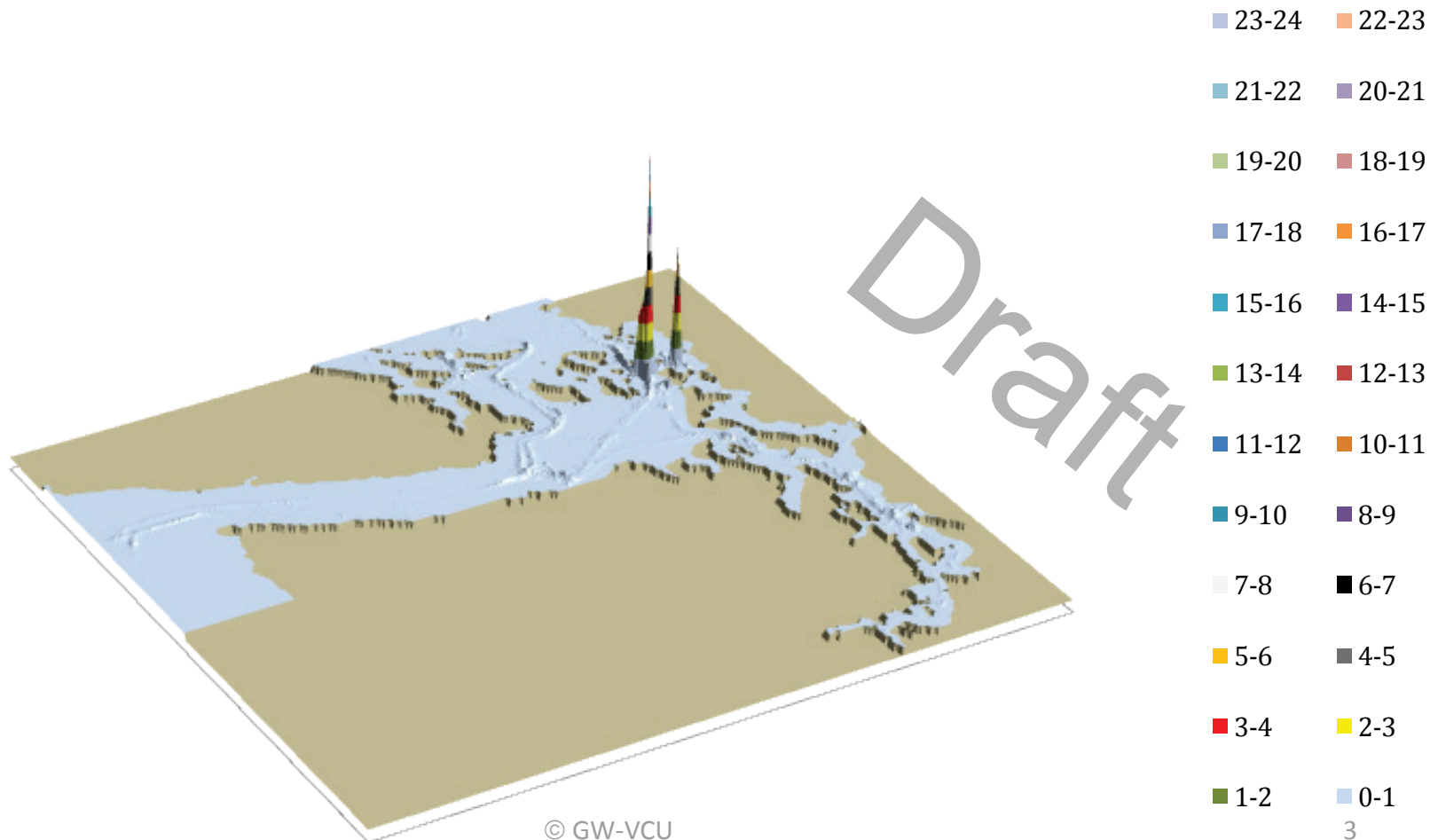
VESSEL TRAFFIC RISK ASSESSMENT (VTRA) 2010

P: Base Case 3D Risk Profile All FV - Pot. Collision Oil Loss: 100% of Base Case PCO



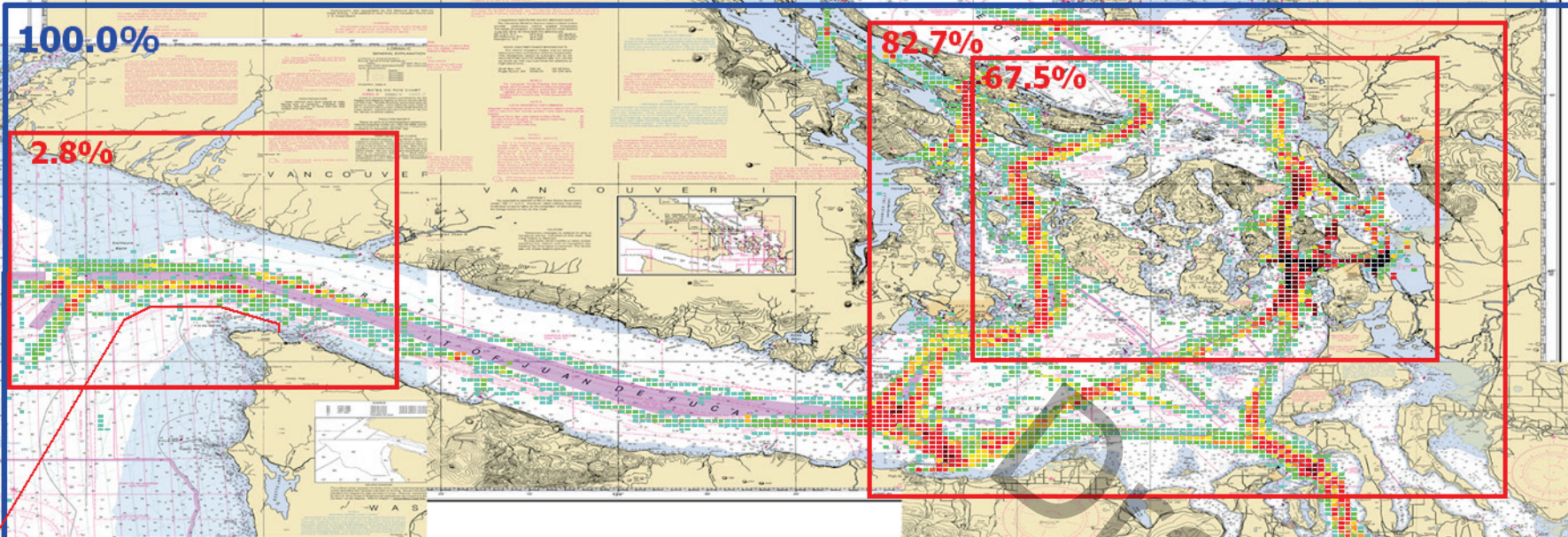
VESSEL TRAFFIC RISK ASSESSMENT (VTRA) 2010

S: DP 415 3D Risk Profile All FV - Pot. Collision Oil Loss: 100% of Base Case PCO

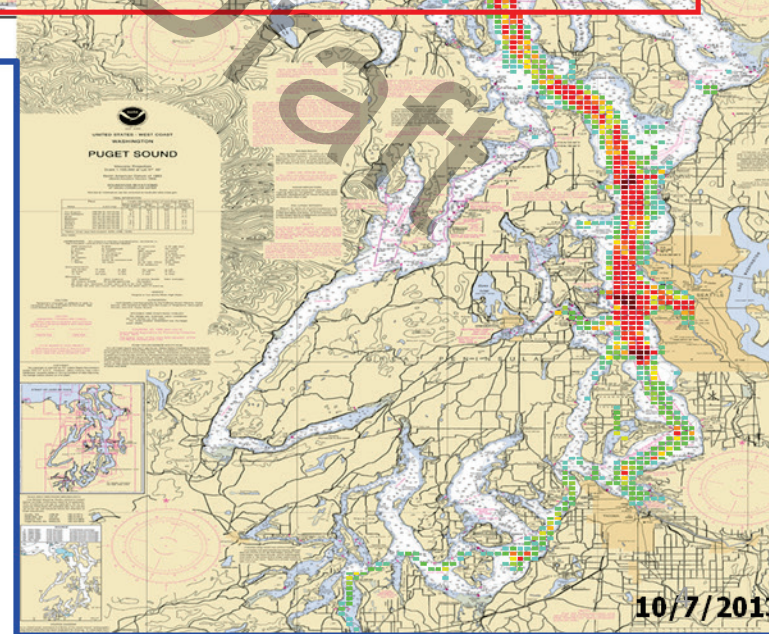


VESSEL TRAFFIC RISK ASSESSMENT (VTRA) 2010

P: VTRA 2010 - BASE CASE - All FV



POTENTIAL COLLISION OIL LOSS - PCO



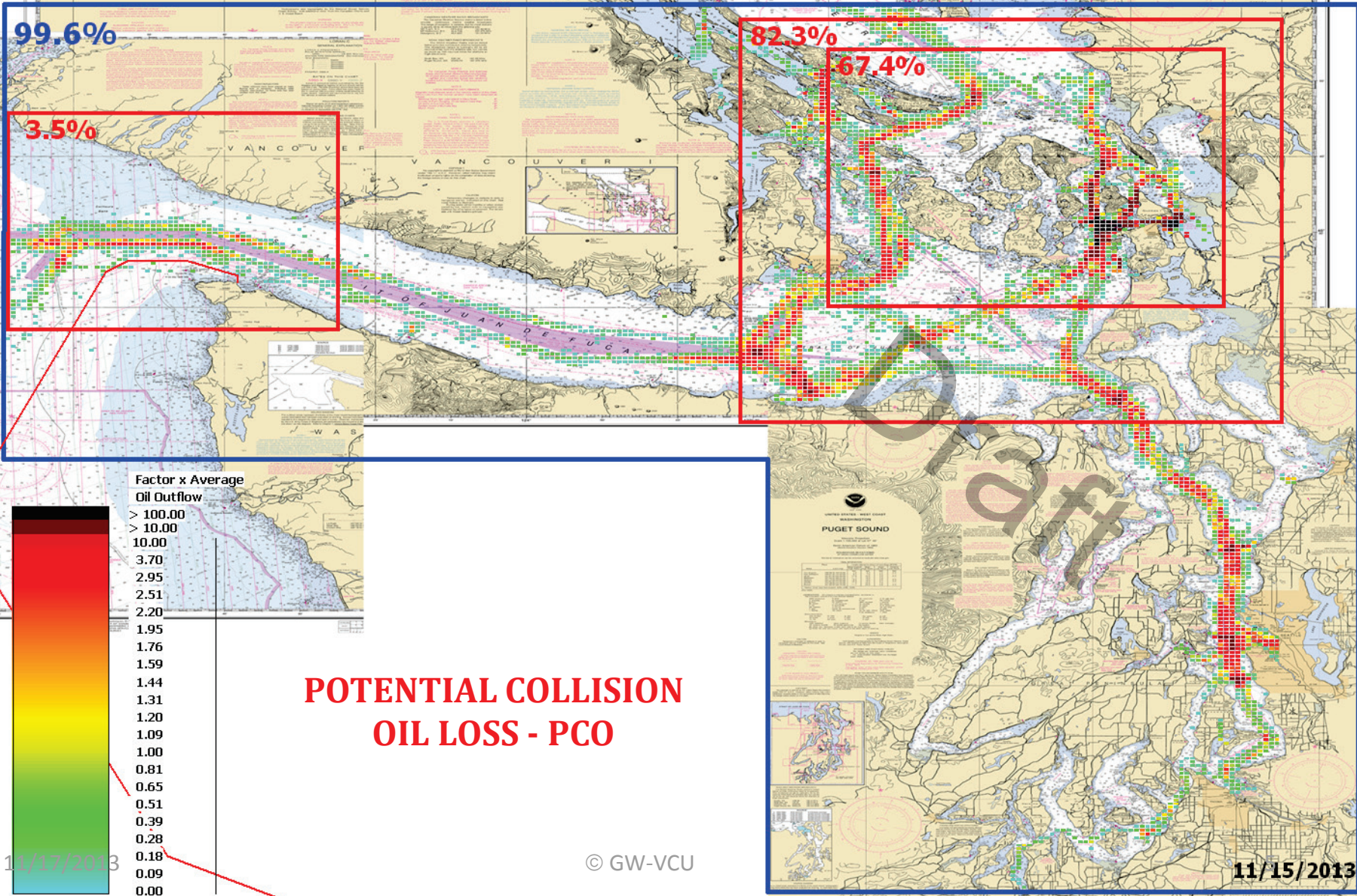
11/17/2013

© GW-VCU

10/7/2013

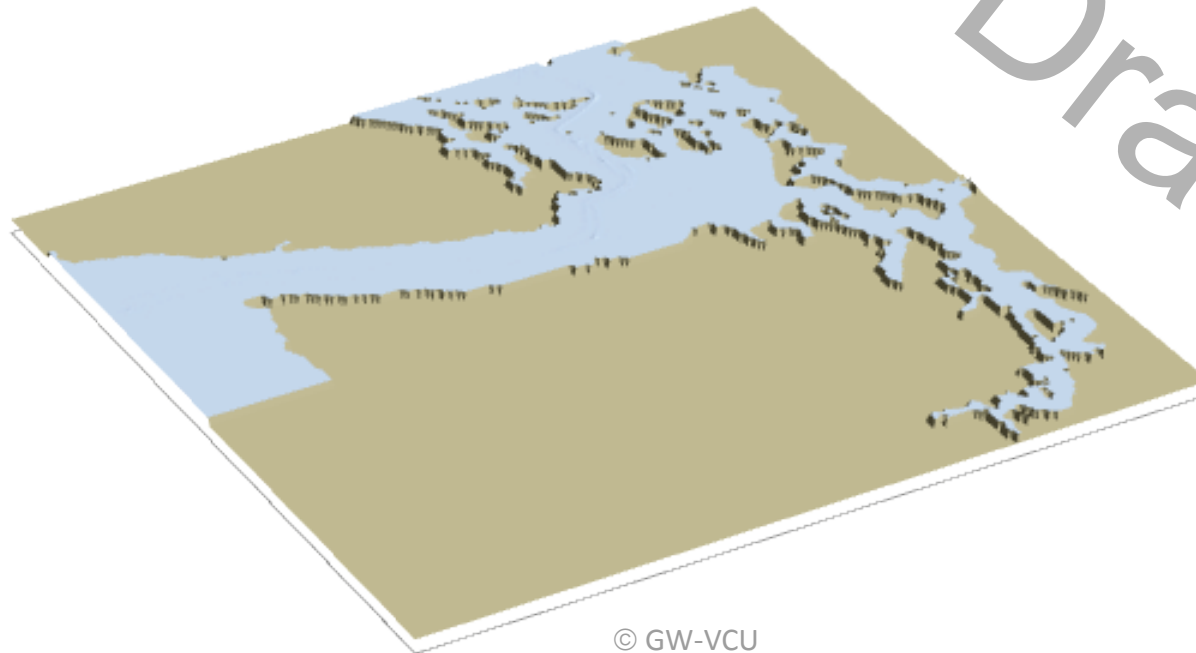
VESSEL TRAFFIC RISK ASSESSMENT (VTRA) 2010

S: VTRA 2010 - Delta Port - Cont. 67 and Bulk 348 - All FV



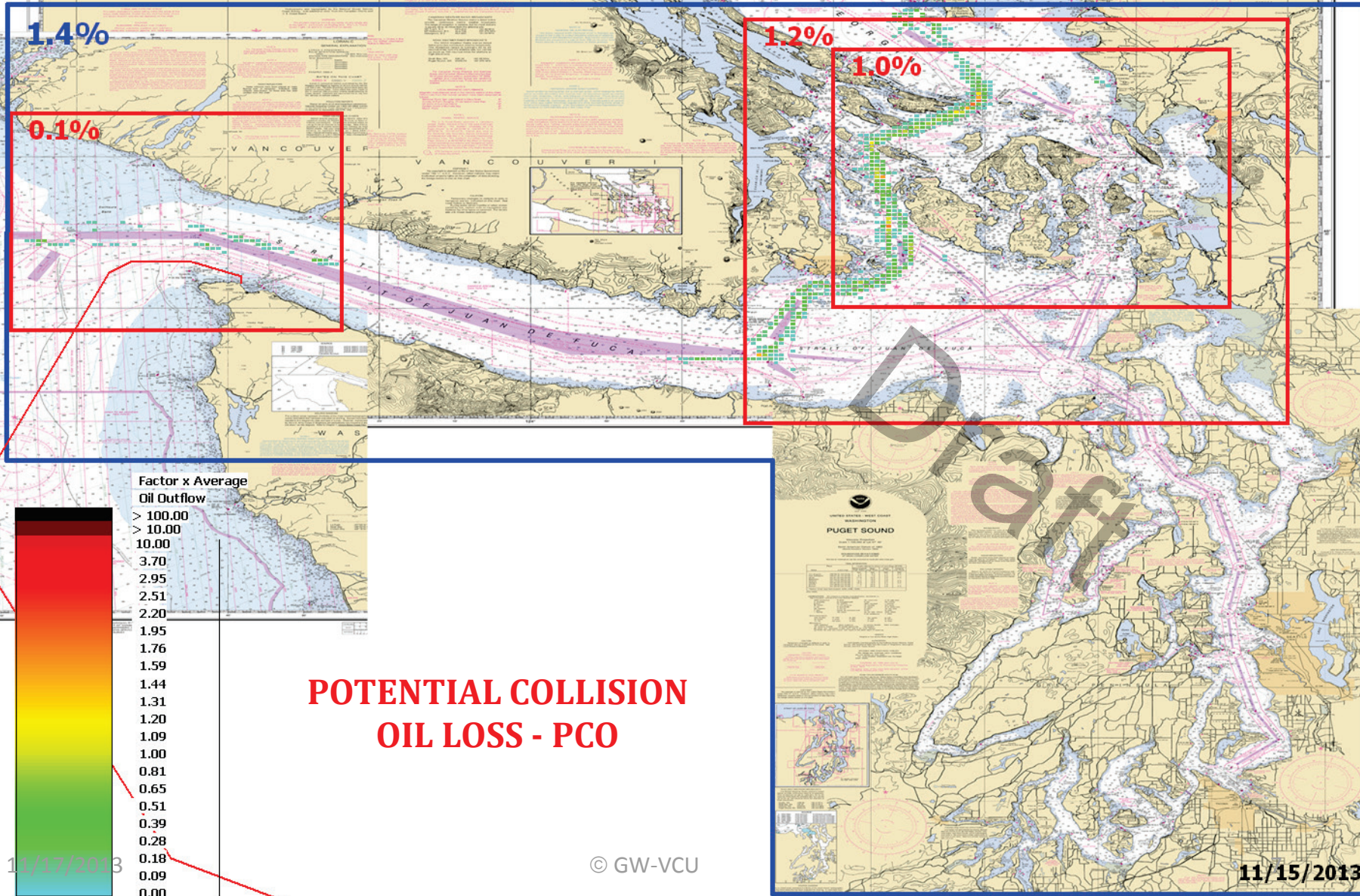
VESSEL TRAFFIC RISK ASSESSMENT (VTRA) 2010

S: DP 415 3D Risk Profile What If FV - Pot. Coll. Oil Loss: 1% of Base Case PCO



VESSEL TRAFFIC RISK ASSESSMENT (VTRA) 2010

S: VTRA 2010 - Delta Port - Cont. 67 and Bulk 348 - WhatIf FV



POTENTIAL COLLISION OIL LOSS - PCO

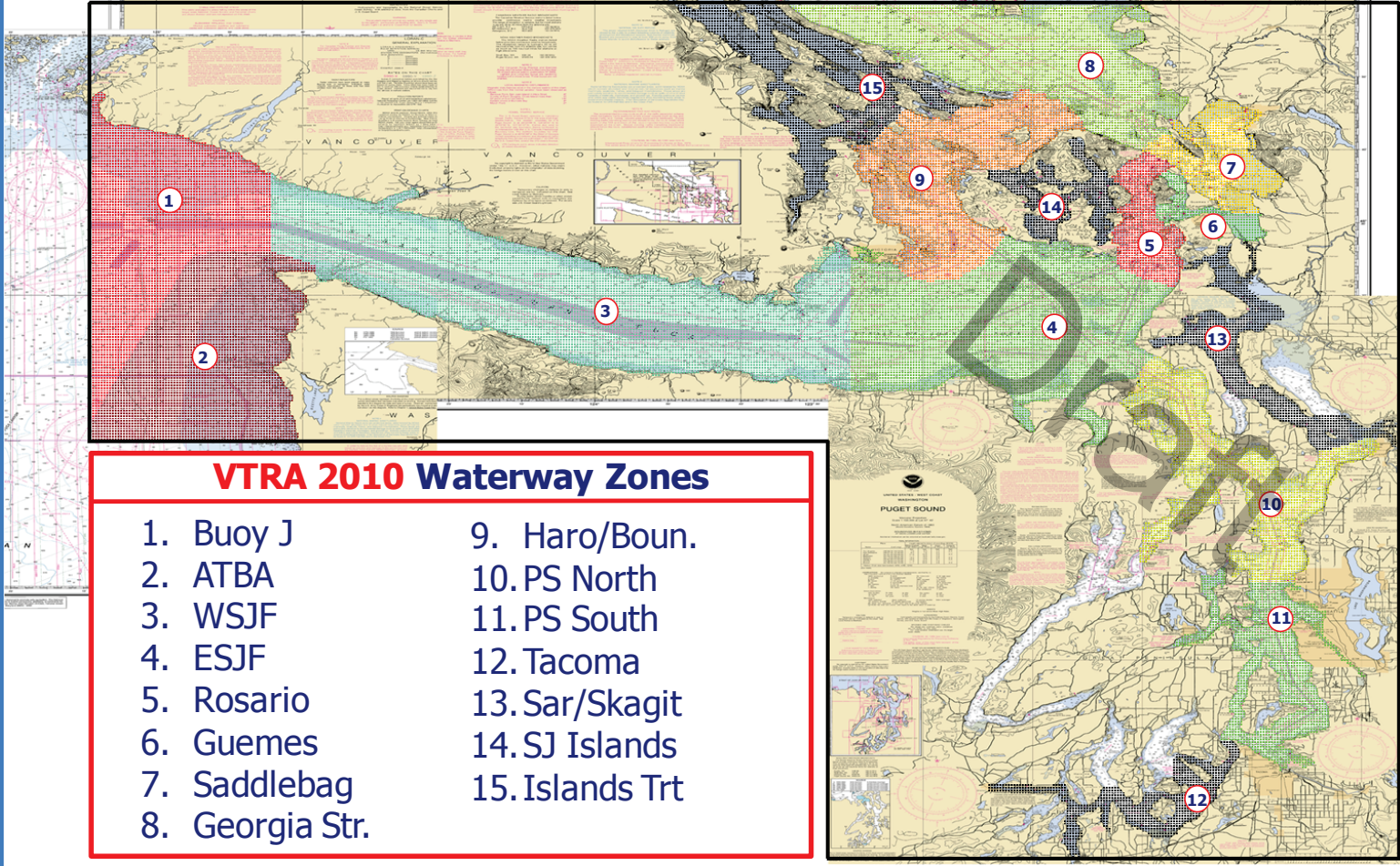
11/17/2013

© GW-VCU

11/15/2013

VESSEL TRAFFIC RISK ASSESSMENT (VTRA) 2010

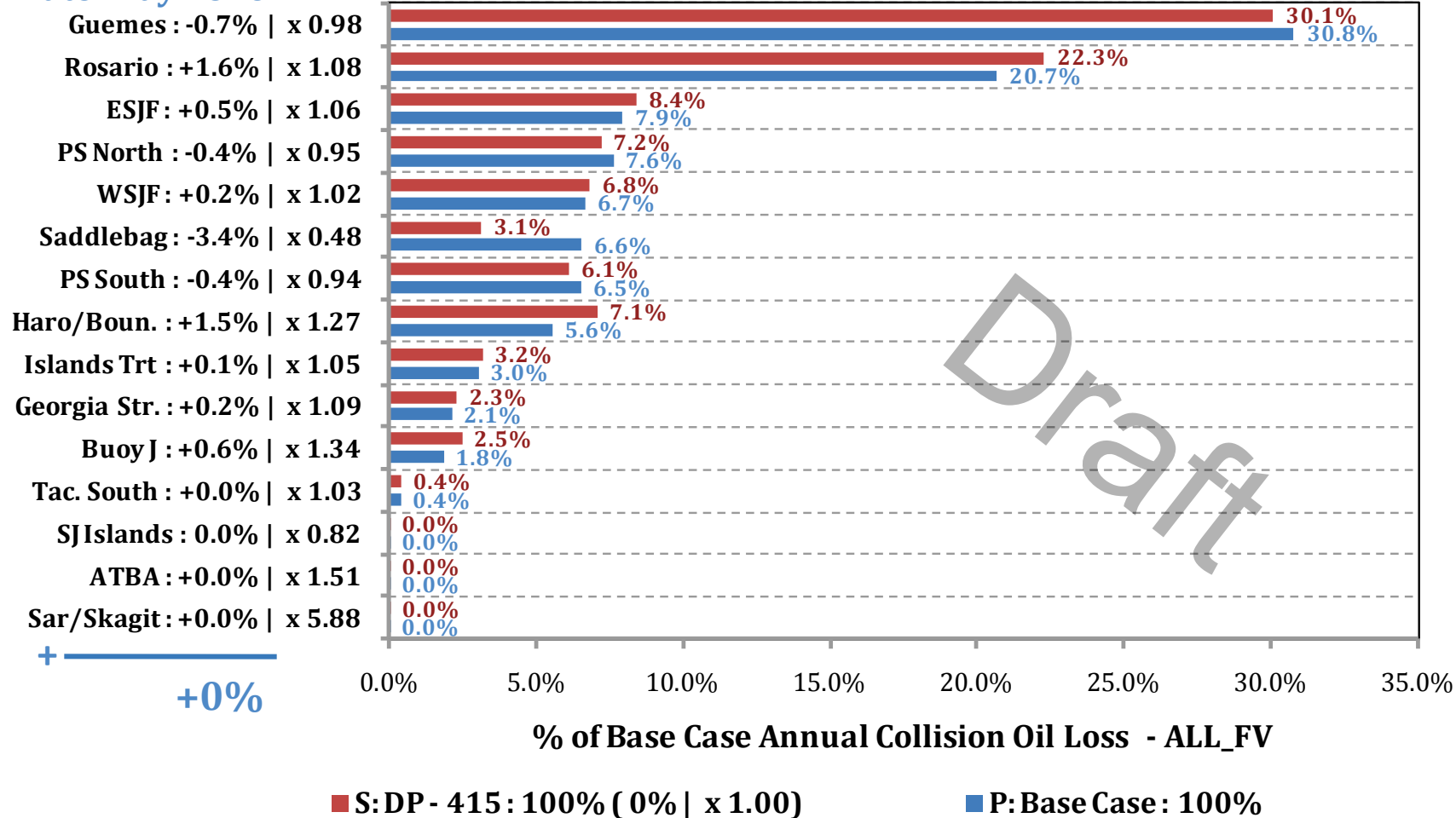
DEFINITION OF 15 WATERWAY ZONES



VESSEL TRAFFIC RISK ASSESSMENT (VTRA) 2010

% Base Case Collision Oil Loss - ALL_FV

Waterway Zone:



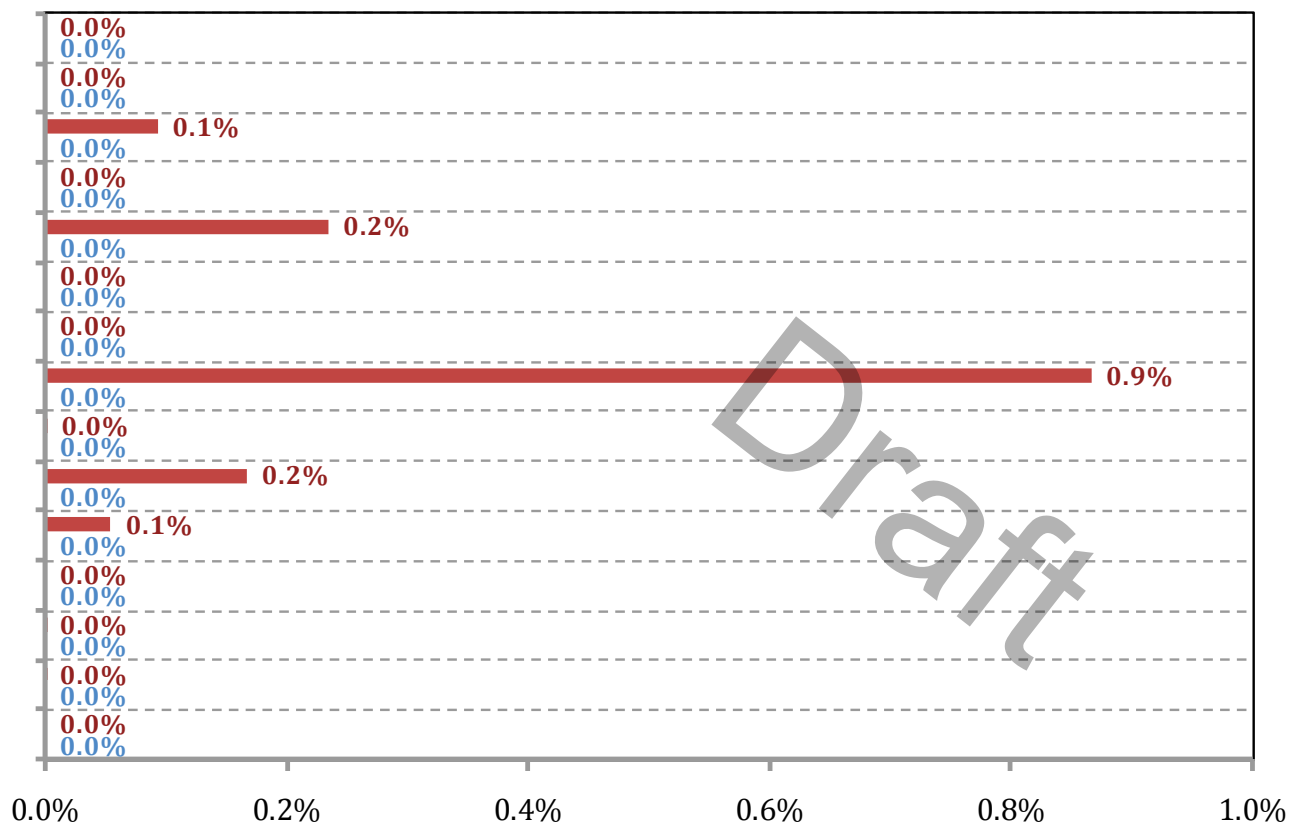
VESSEL TRAFFIC RISK ASSESSMENT (VTRA) 2010

Waterway Zone:

Guemes : 0.0%
Rosario : 0.0%
ESJF : +0.1%
PS North : 0.0%
WSJF : +0.2%
Saddlebag : 0.0%
PS South : 0.0%
Haro/Boun. : +0.9%
Islands Trt : +0.0%
Georgia Str. : +0.2%
Buoy J : +0.1%
Tac. South : 0.0%
SJIslands : +0.0%
ATBA : +0.0%
Sar/Skagit : 0.0%

+1%

% Base Case Collision Oil Loss - WhatIf



% of Base Case Annual Collision Oil Loss - WhatIf

■ S: DP - 415 : 1% (+1%)

■ P: Base Case : 0%