

VESSEL TRAFFIC RISK ASSESSMENT (VTRA) 2010

3D Relative Risk Profile Comparison
Potential Collision Oil Loss

CASE P: BASE CASE & CONTAINER 17 KNOTS MAX

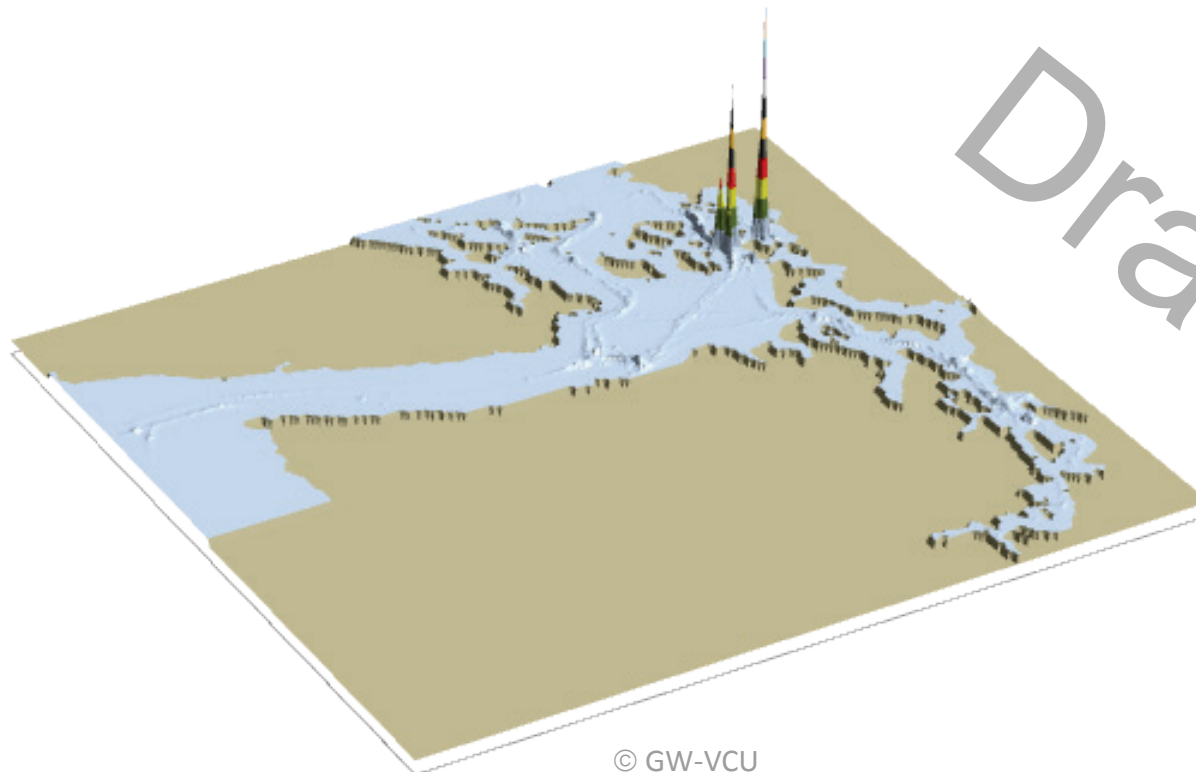
Dr. J. Rene van Dorp and Dr. Jason R.W Merrick

November 2013



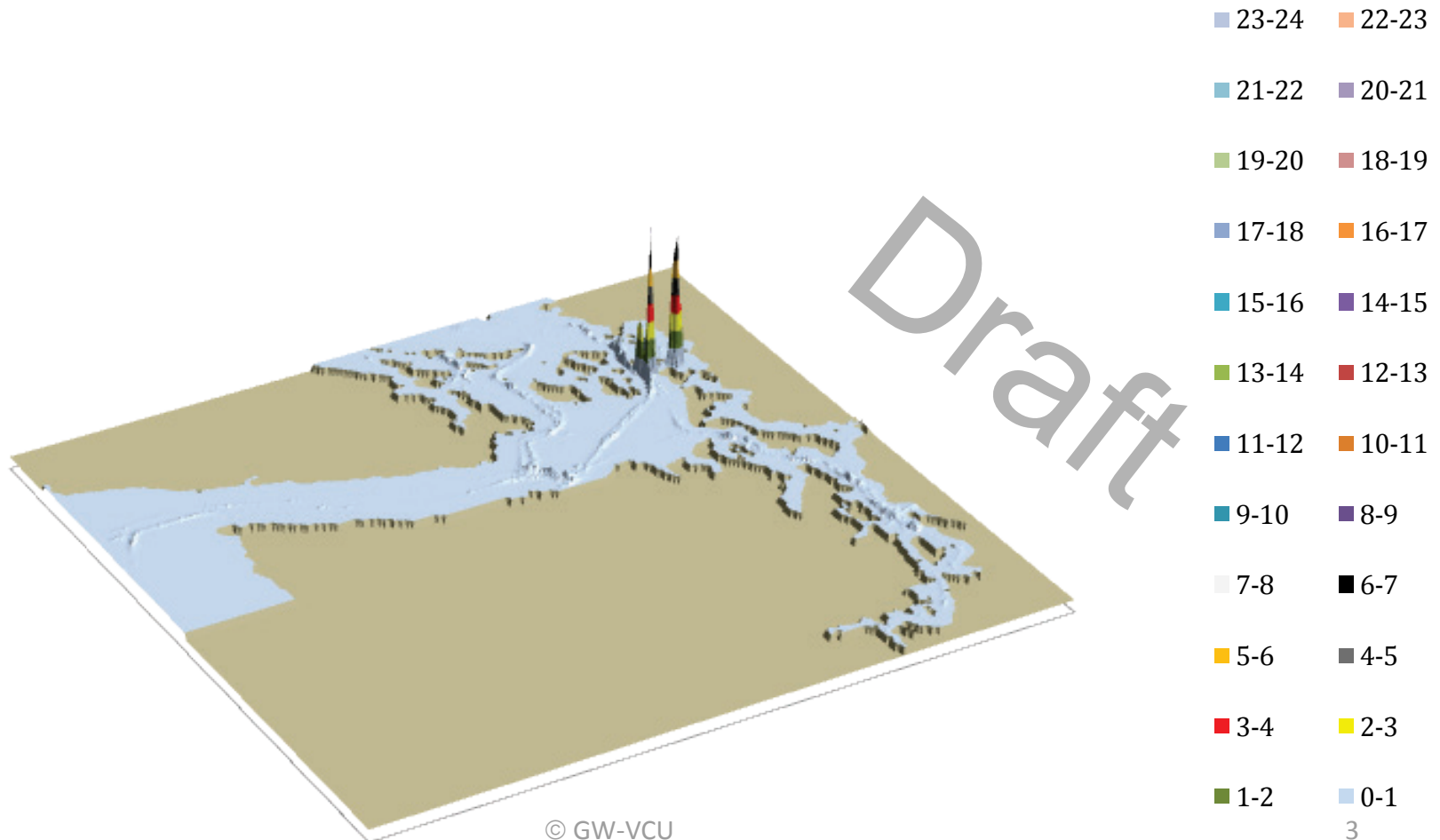
VESSEL TRAFFIC RISK ASSESSMENT (VTRA) 2010

P: Base Case 3D Risk Profile All FV - Pot. Collision Oil Loss: 100% of Base Case PCO



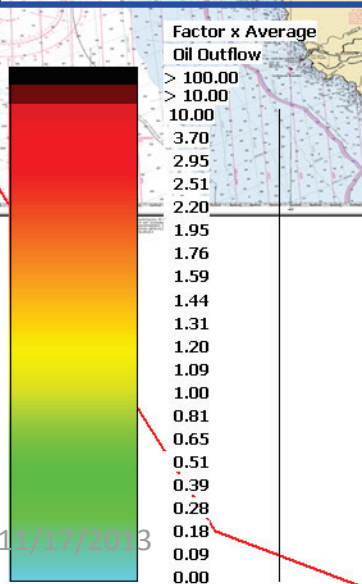
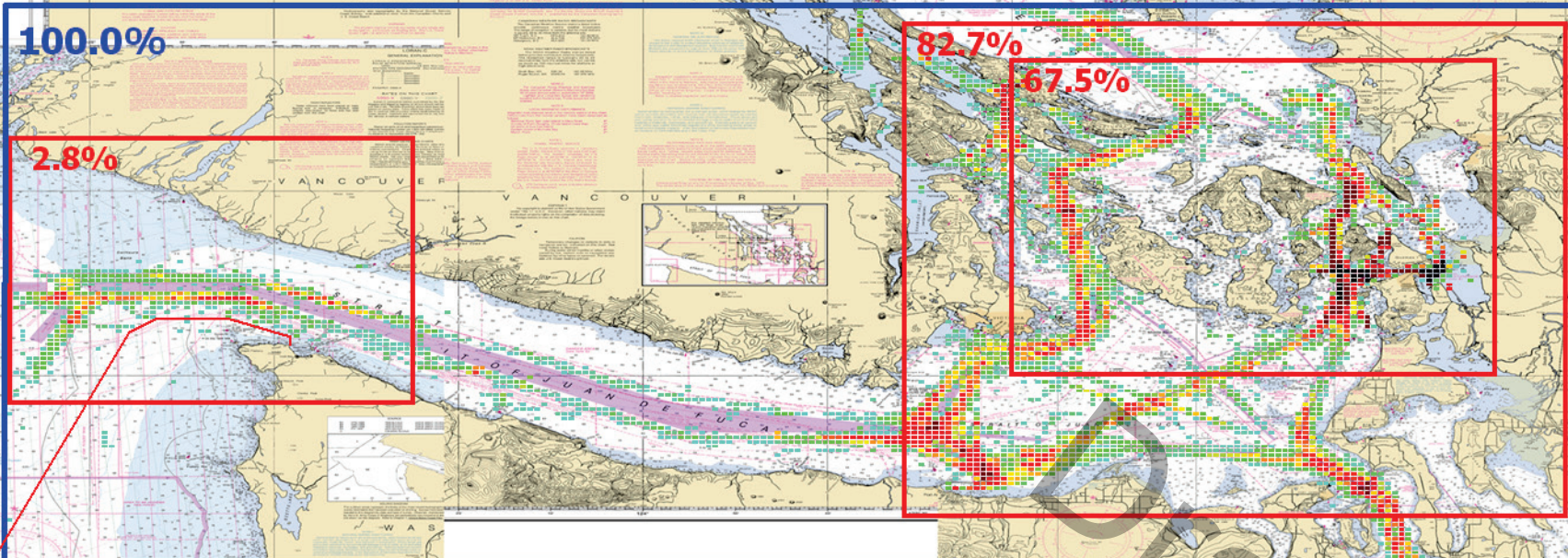
VESSEL TRAFFIC RISK ASSESSMENT (VTRA) 2010

P: BC & CONT 17KNTS 3D Risk Profile All FV - Pot. Collision Oil Loss: 91% of Base Case PCO

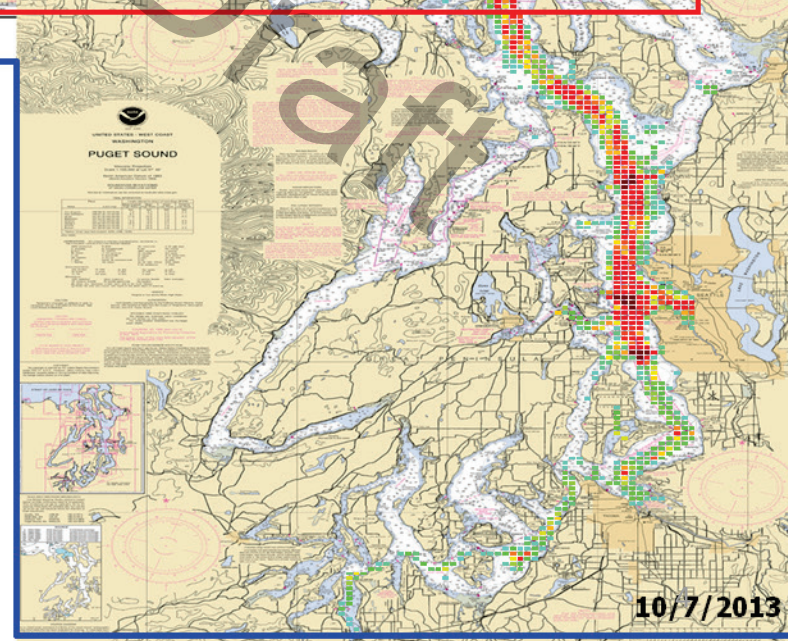


VESSEL TRAFFIC RISK ASSESSMENT (VTRA) 2010

P: VTRA 2010 - BASE CASE - All FV



POTENTIAL COLLISION OIL LOSS - PCO



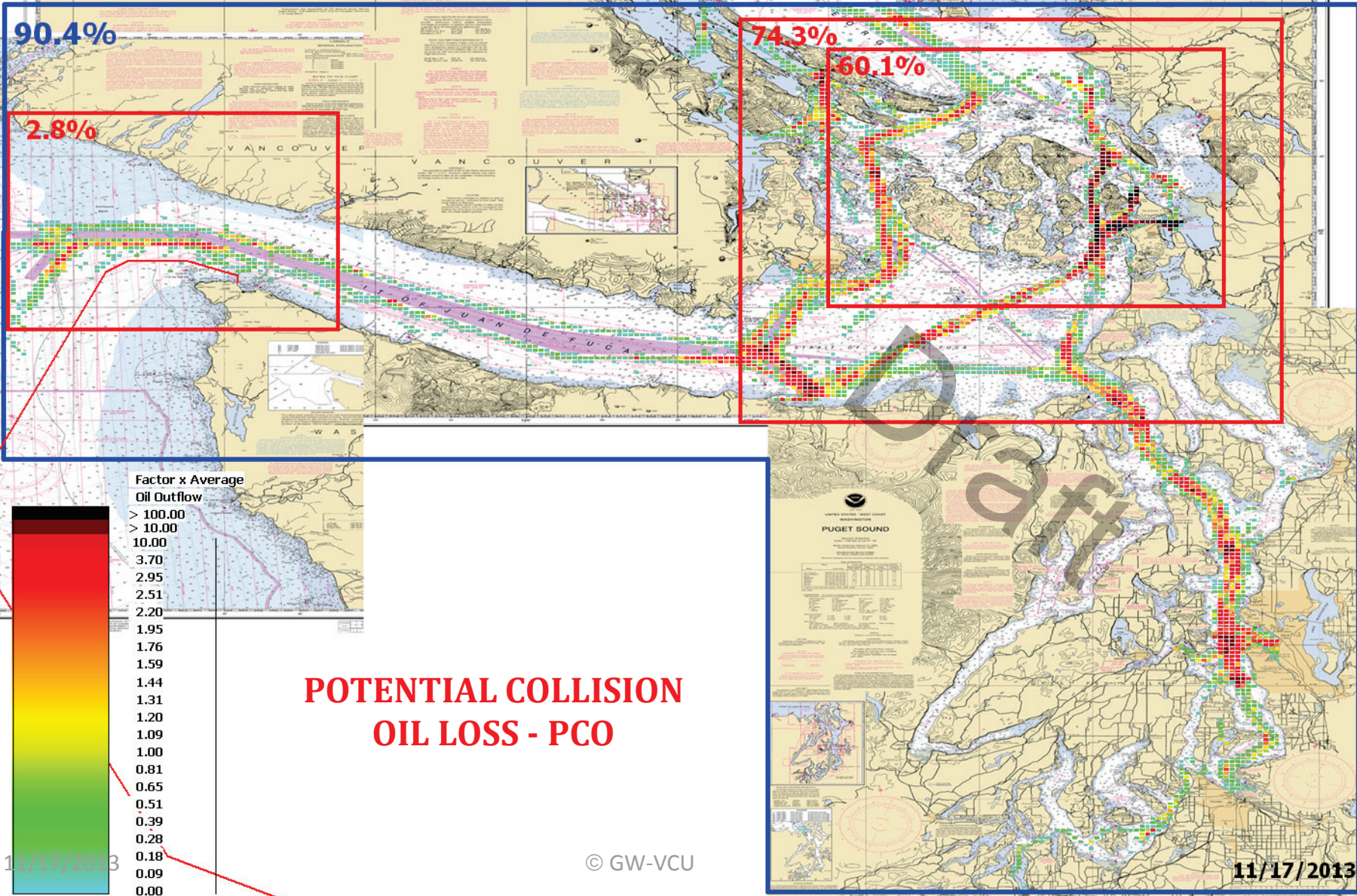
11/17/2013

© GW-VCU

10/7/2013

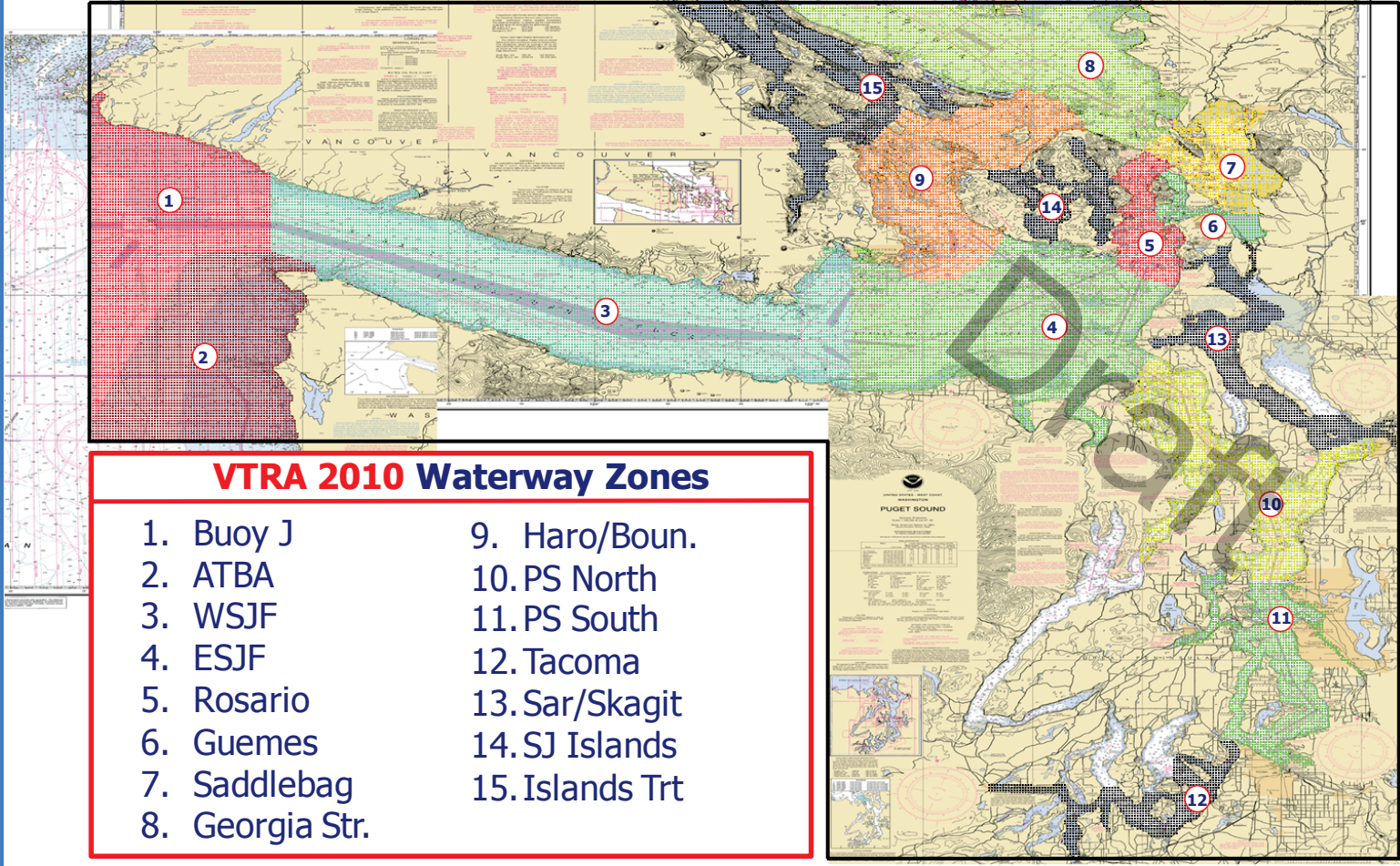
VESSEL TRAFFIC RISK ASSESSMENT (VTRA) 2010

P: BC & Slow containers to 17 knots max speed - All FV



VESSEL TRAFFIC RISK ASSESSMENT (VTRA) 2010

DEFINITION OF 15 WATERWAY ZONES



VESSEL TRAFFIC RISK ASSESSMENT (VTRA) 2010

% Base Case Collision Oil Loss - ALL_FV

Waterway Zone:

