

# VESSEL TRAFFIC RISK ASSESSMENT (VTRA) 2010

3D Relative Risk Profile Comparison  
Vessel Time Exposure

**CASE P: BASE CASE & CONTAINER 17 KNOTS MAX**

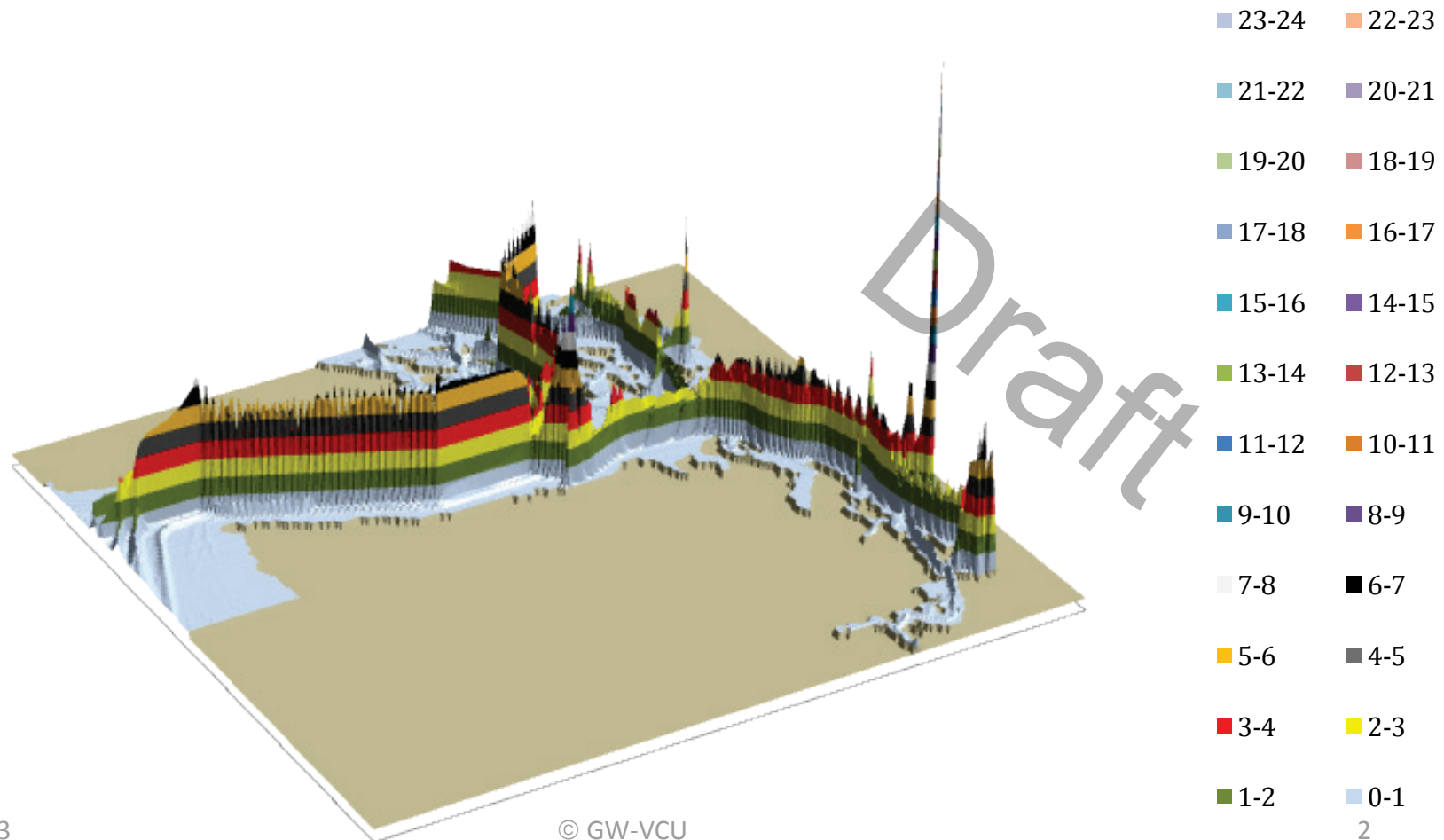
**Dr. J. Rene van Dorp and Dr. Jason R.W Merrick**

**November 2013**



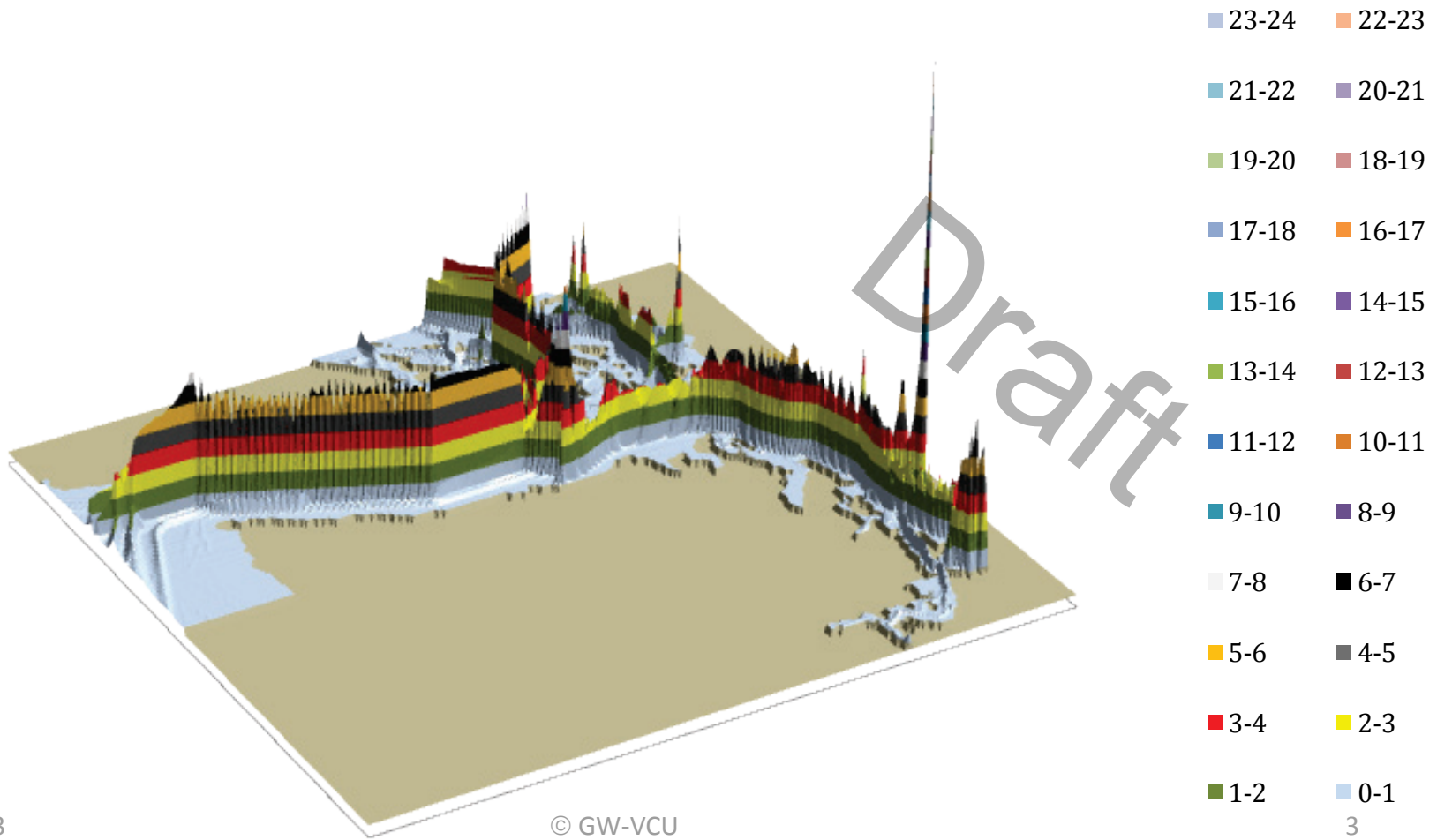
# VESSEL TRAFFIC RISK ASSESSMENT (VTRA) 2010

## P: Base Case 3D Risk Profile All FV - Vessel Time Exposure: 100% of Base Case VTE



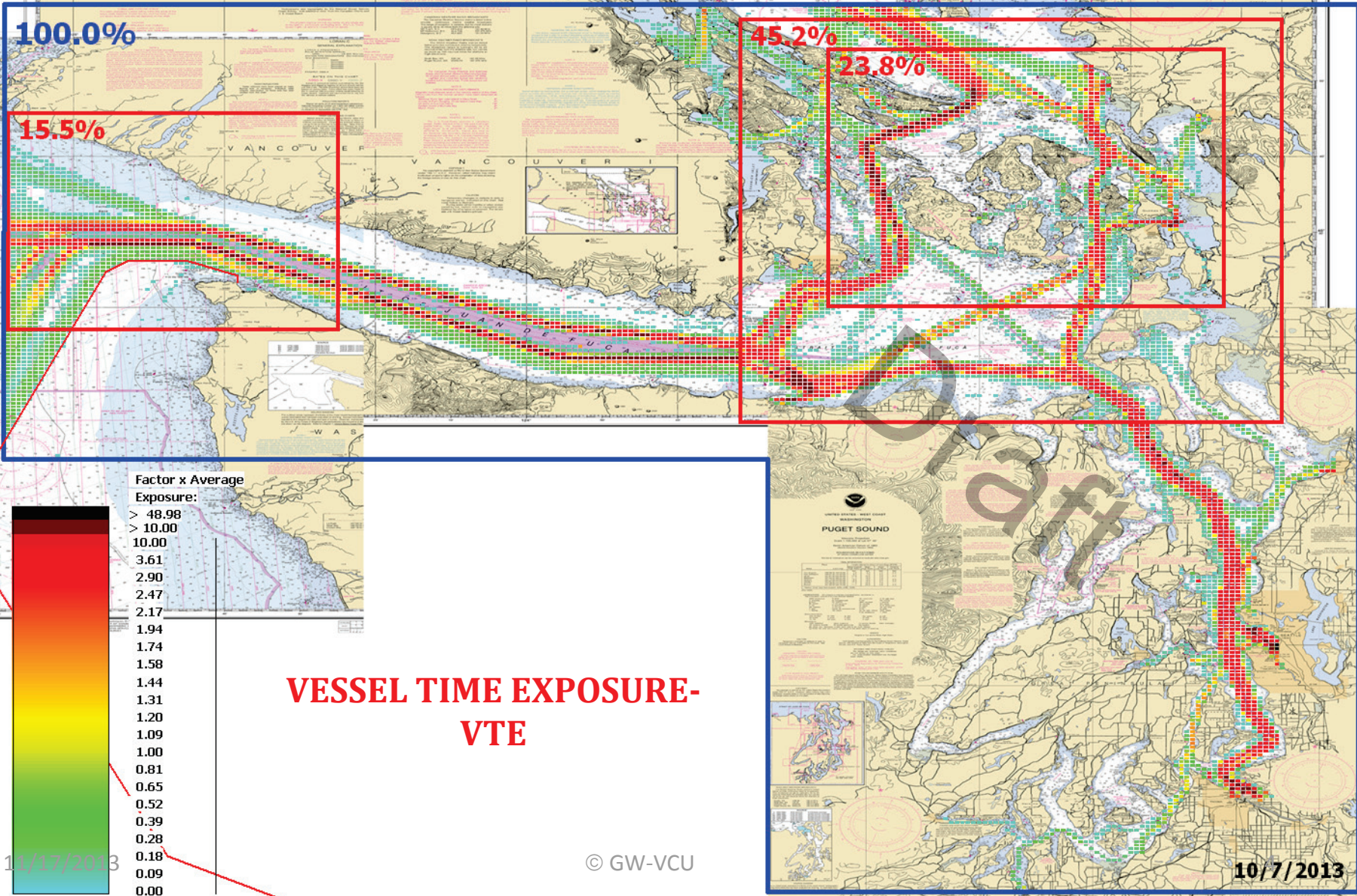
# VESSEL TRAFFIC RISK ASSESSMENT (VTRA) 2010

## P: BC & CONT 17KNTS 3D Risk Profile All FV - Vessel Time Exposure: 104% of Base Case VTE



# VESSEL TRAFFIC RISK ASSESSMENT (VTRA) 2010

P: VTRA 2010 - BASE CASE - All FV



Factor x Average Exposure:

- > 48.98
- > 10.00
- 10.00
- 3.61
- 2.90
- 2.47
- 2.17
- 1.94
- 1.74
- 1.58
- 1.44
- 1.31
- 1.20
- 1.09
- 1.00
- 0.81
- 0.65
- 0.52
- 0.39
- 0.28
- 0.18
- 0.09
- 0.00

VESSEL TIME EXPOSURE-  
VTE

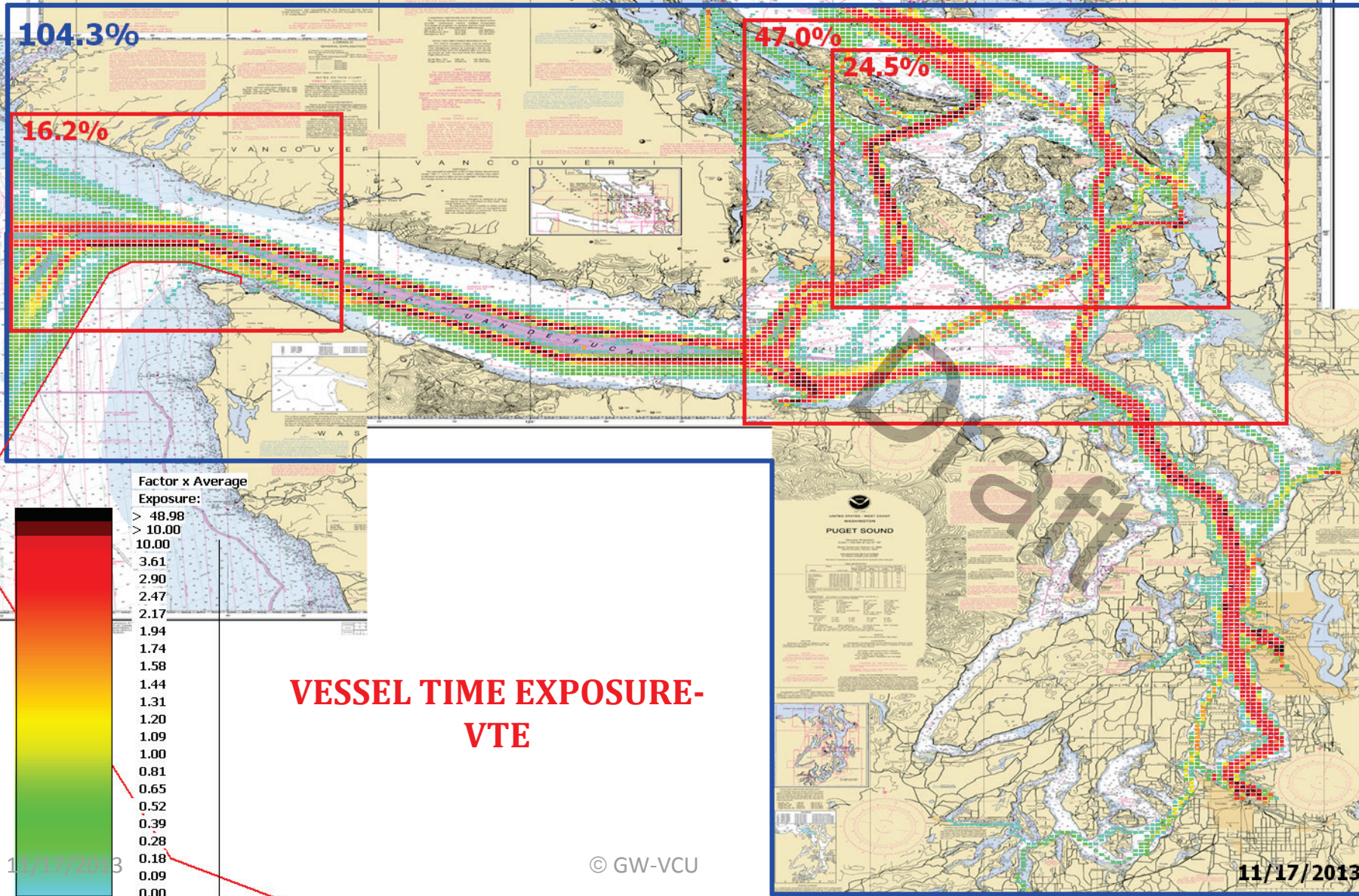
11/17/2013

© GW-VCU

10/7/2013

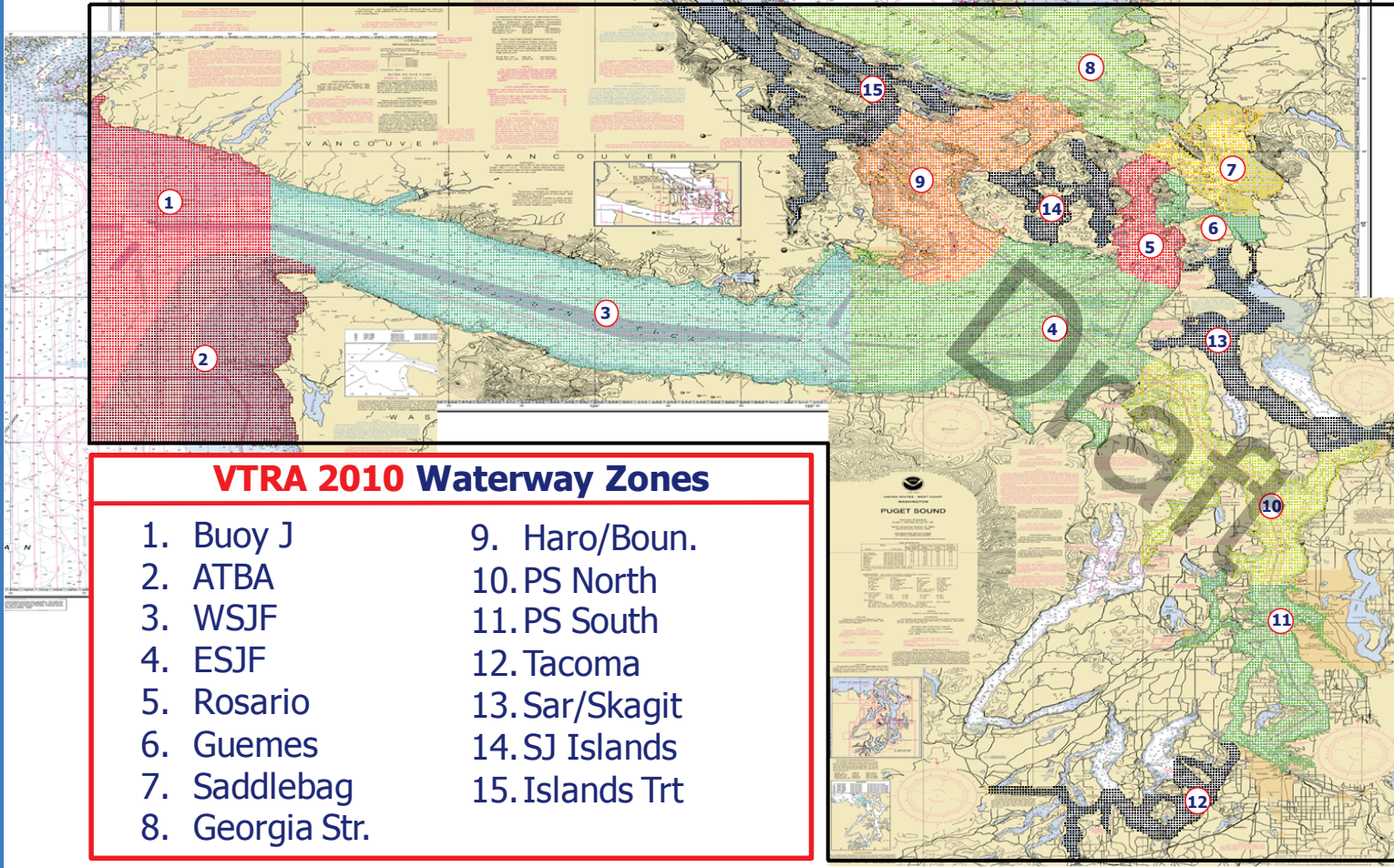
# VESSEL TRAFFIC RISK ASSESSMENT (VTRA) 2010

**P: BC & Slow containers to 17 knots max speed - All FV**



# VESSEL TRAFFIC RISK ASSESSMENT (VTRA) 2010

## DEFINITION OF 15 WATERWAY ZONES



# VESSEL TRAFFIC RISK ASSESSMENT (VTRA) 2010

## % Base Case Vessel Time Exposure (VTE) - ALL\_FV

### Waterway Zone:

